

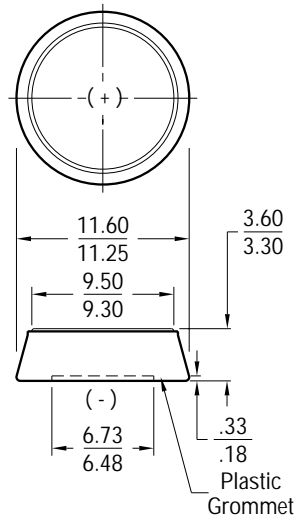


Eveready Battery Company, Inc.
 Checkerboard Square
 St. Louis, MO 63164
 Telephone: 1-800-383-7323
 Internet: www.energizer.com

Engineering Data

ENERGIZER NO. 387S

Dimensions (mm)



Millimeters	Inches
.18	.007
.33	.013
3.30	.130
3.60	.142
6.48	.255
6.73	.265
9.30	.366
9.50	.374
11.25	.443
11.60	.457

Chemical System: Silver Oxide (Zn/Ag₂O)

Designation: IEC-SR42

Battery Voltage: 1.55 Volts

Average Weight: 1.0 grams (.035 oz.)

Volume: .30 cubic centimeters (.02 cubic inch)

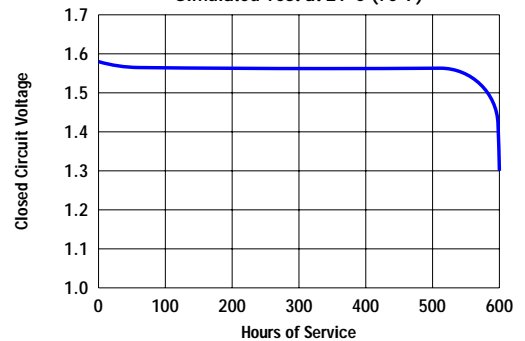
Average Service Capacity (to 1.3 Volt): 60 mAh
 (Rated capacity at 15K ohms continuous at 21°C)

DESIGNED FOR USE ON CONTINUOUS LOW DRAIN

SIMULATED APPLICATION TESTS
 Estimated Average Service at 21°C (70°F)

Schedule	Typical Drains @ 1.55V (milliamperes)	Load (ohms)	CUTOFF VOLTAGE
			1.3V hours
24 hours / day	.103	15,000	600

TYPICAL DISCHARGE CHARACTERISTICS
 Simulated Test at 21°C (70°F)



INTERNAL RESISTANCE Closed circuit voltage no less than 0.90 volts on a load of 100 ohms at 21°C (70°F) for 0.1 to 2.0 seconds.

Typical closed circuit voltage during discharge on a load of 2,000 ohms for 0.0078 seconds

Depth of Discharge as Percent of Rated Capacity

Temperature	0%	40%	80%
21°C (70°F)	1.57V	1.55V	1.55V
-10°C (14°F)	1.36V	1.38V	1.44V

IMPORTANT NOTICE

This data sheet contains information specific to batteries manufactured at time of its publication. Please contact your Energizer representative for most current information. Contents herein do not constitute a warranty.